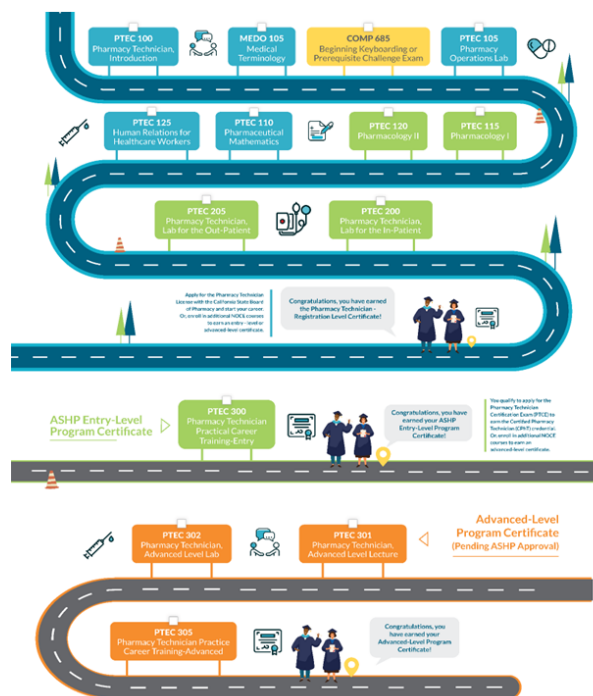


PHARMACY TECHNICIAN – ADVANCED LEVEL



Certificate of Completion

Program Code: 3P39948

This program prepares students for licensure and employment as an advanced-level pharmacy technician at a community and institutional pharmacy. The certificate program exceeds the State Board of Pharmacy's registration requirements and meets American Society of Health-System Pharmacists (ASHP) accreditation advanced level standards.

Code	Title	Hours
Required Core Courses (126 Hours)		
PTEC 301	Pharmacy Technician Advanced Level Lecture	48
PTEC 302	Pharmacy Technician Advanced Level Lab	60
PTEC 305	Pharmacy Technician Practical Career Training - Advanced	18
Total Hours		126

Plan of Study

First Year

First Semester	Hours	Second Semester	Hours
PTEC 301		48 PTEC 305	18
PTEC 302		60	
	108		18
Total Hours	126		

List of Courses

PTEC 301 48 Hours

Pharmacy Technician Advanced Level Lecture

Prerequisite(s): Completion of the ASHP Entry Level Certificate.

This course prepares students for practice as Advanced- level pharmacy technicians in a broad range of advanced roles in a variety of contemporary settings (e.g., community, hospital, home care, long-term care). Students acquire additional knowledge, skills, behaviors, and abilities beyond those of the Entry-level pharmacy technician. Textbook Required. (Apportionment)

PTEC 302 60 Hours

Pharmacy Technician Advanced Level Lab

Prerequisite(s): Completion of the ASHP Entry Level certificate and PTEC 301 Pharmacy Technician Advanced Level Lecture or Co-requisite: Concurrently with PTEC 301 Pharmacy Technician Advanced Level Lecture.

The course prepares students for practice as Advanced- level pharmacy technicians, in a broad range of advanced roles in a variety of contemporary settings (e.g., community, hospital, home care, long-term care). Students acquire additional knowledge, skills, behaviors, and abilities beyond those of the Entry-level pharmacy technician. The Lab is designed to be taken concurrently or after the lecture course. (Apportionment)

PTEC 305 18 Hours

Pharmacy Technician Practical Career Training - Advanced

Prerequisite(s): PTEC 301 Pharmacy Technician Advanced Level Lecture and PTEC 302 Pharmacy Technician Advanced Level Lab and Enrollment must be within one year of completion of PTEC 302 Pharmacy Technician Advanced Level Lab.

This course is designed to provide pharmacy technician students with field experience in an in-patient pharmacy environment. It requires weekly class participation plus 200 experiential hours in an approved pharmacy. Class topics include portfolio development, job search, professionalism, current issues in pharmacy, and work performance. (Apportionment)

Goal and Objections

After completion of the Pharmacy Technician Program – Entry Level, the goal of this program is to prepare students for practice as Advanced-level pharmacy technicians, in a broad range of advanced roles, under the direct supervision of a licensed pharmacist, at a community and institutional pharmacy. Students will acquire additional knowledge, skills, behaviors, and abilities beyond those of the Entry-level pharmacy technician, needed for such advanced practice.

Program Objectives

This program will provide students with the knowledge and skills to:

- Demonstrate capability to manage or supervise pharmacy technicians applying supervisory skills related to human resource policies and procedures.
- Apply critical thinking skills, creativity, and innovation.
- Demonstrate the ability to effectively and professionally communicate as necessary to serve the needs of patients and practice.
- Describe investigational drug process, medications being used in off-label indications, and emerging drug therapies.
- Support wellness promotion and disease prevention programs.
- Prepare compounded sterile preparations and moderate and high-level non-sterile products per current regulations.

- repair or simulate hazardous drug preparations per current regulations.
- Initiate, verify, and manage the adjudication of billing for complex and/or specialized pharmacy services and goods.
- Process, handle, and demonstrate administration techniques and document administration of immunizations and other injectable medications.
- Verify measurements, preparation, and and/or packaging of medications produced by other healthcare professionals.
- Perform point-of-care testing to assist pharmacist in assessing patient's clinical status.
- Participate in the operations of medication management services.
- Participate in technical and operational activities to support the Pharmacists' Patient Care Process as assigned.
- Obtain certification as a Basic Life Support Healthcare Provider.
- Describe major trends, issues, goals, and initiatives taking place in the pharmacy profession.

Program Goals

- Provide students with knowledge of advanced practice pharmacy technician career opportunities including knowledge and skills required
- Provide students the necessary advanced theory and hands-on practice needed to demonstrate proficiency before completing the program, so they are prepared to obtain an advanced-level position at a pharmacy
- Prepare students to adequately function in a supervisory position at a community or institutional pharmacy setting
- Prepare students to appropriately interact with patients and other health care professionals in medication management services

Essential Standards and Technical Functions

Cognitive Ability:

- Apply critical thinking for collecting, analyzing, interpreting and integrating information and knowledge in order to safely and accurately process provider orders and promote positive patient outcomes and professional behavior.
- Demonstrate ability to follow policies and procedures required by clinical and academic settings.
- Demonstrate ability to organize and prioritize tasks.
- Demonstrate ability to function effectively under stress and time constraints.
- Demonstrate awareness of, and ability to work with, diverse populations.
- Demonstrate ability to follow policies and procedures required by clinical and academic settings.

Communication Ability:

- Demonstrate ability to speak, read, comprehend, and write English at a level that meets the need for clear and effective communication with instructors, peers, other healthcare professionals, and patients.
- Demonstrate ability to adjust non-verbal and verbal language appropriately to meet the needs of the multilingual and culturally diverse patients, families, and colleagues.
- Demonstrate the ability to use technology and software to communicate effectively in the workplace, with professionals and patients.

Interpersonal/ Intrapersonal Skills and Behavior

- Demonstrate emotional and psychological stability to function under stress and to adopt to ever-changing situations.
- Follow the Professional Code of Ethics as prescribed by the APhA and APTA/NPTA.

Visual Ability:

- Demonstrate visual acuity for reading, evaluating, and processing prescriptions, labels, and packages of all types.

Auditory Ability:

- Demonstrate hearing acuity to communicate and interact with patients, pharmacists, and other health care professionals in a variety of settings.

Tactile Ability:

- Demonstrate tactile ability for preparation and compounding of sterile and non-sterile products.
- Demonstrate ability to put on, wear and remove Personal Protective Equipment, or PPE.

Olfactory Ability:

- Demonstrate olfactory ability to detect unusual odors/smells in the environment.
- Strength and Mobility:
- Demonstrate physical abilities and strength to perform clinical and administrative duties.
- Demonstrate strength to lift heavy objects.
- Demonstrate ability to move in tight quarters.
- Demonstrate ability to freely walk, stand, sit, squat, balance, climb, reach, grip, lift, pull, and push as needed in the performance of clinical duties.

Motor Skills:

- Demonstrate gross and fine motor abilities to effectively prepare, package, carry, and deliver medications in a timely manner.

Physical Endurance:

- Demonstrate physical endurance to complete assigned periods, the required shift, and assigned tasks.

Environmental Tolerance:

- Demonstrate ability to work in the pharmaceutical environment.
- Demonstrate sensitivity and ability to protect self and others from environmental risks and hazards.
- Demonstrate ability to tolerate prolonged periods of time amidst artificial lighting, air conditioning, dust and odors, residue from cleaning products, noise, and congested workplace.
- Demonstrate ability to wear Personal Protective Equipment, or P.P.E., for extended periods of time during work, educational study, and labs.
- Demonstrate awareness that the health care environment may contain latex and other allergens, including but not limited to medication (topical and ingestible), chemical, and mundane; tolerance of such allergens in the workplace must also be demonstrated.