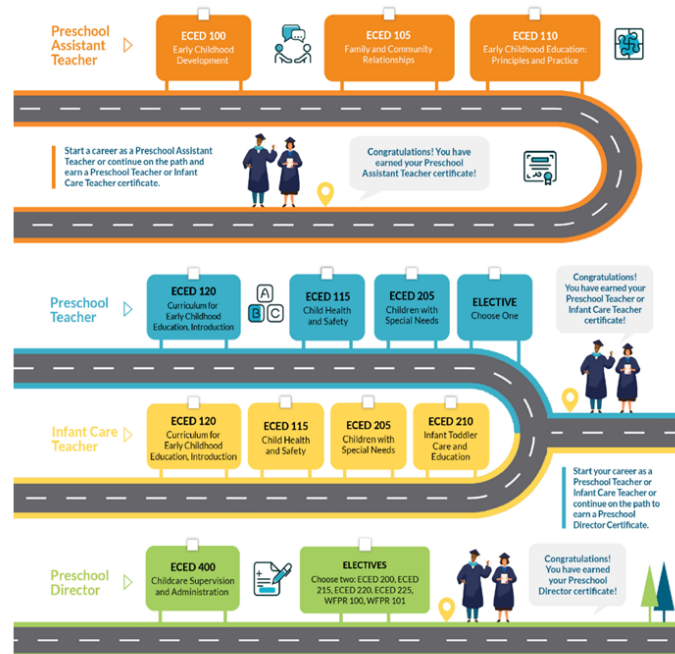


ECE PRESCHOOL TEACHER



*The program meets the educational requirements of the Department of Social Services, Community Care Licensing Division to work in a licensed private preschool or childcare center.

Code	Title	Hours
Core Courses (Required 278 hours)		
ECED 100	Early Childhood Development	54
ECED 105	Family and Community Relationships	36
ECED 120	Curriculum for Early Childhood Education, Introduction	54
ECED 115	Child Health and Safety	36
ECED 110	Early Childhood Education, Principles and Practice	54
ECED 205	Children with Special Needs	36
Elective Courses (Required 36 Hours)		
Must choose one of six courses:		36
ECED 215	Language Arts and Literacy in Early Childhood	36
ECED 225	Early Childhood Education, Music and Movement	36
ECED 200	Early Childhood Education, Science and Math	36
ECED 220	Early Childhood Education, Creative Experiences	36
WFPR 100 or WFPR 101	Career Skills and Resource Lab Virtual Career Skills and Resource Lab	36
Total Hours		306

Certificate of Completion

Program Code: 3P40951

The Early Childhood Education (ECE) Preschool Teacher certificate is designed, as the second level in a series of certificate options, to prepare students for entry into childcare and education support in a variety of state licensed facilities including preschool and childcare center. Students can be expected to learn the following: developmental stages of children from prenatal to middle childhood, sociological relationships between family and society, health and safe practice in a child care setting, skills and knowledge needed for developing emergency plans and responding to health, and examination of the history, basic principles, philosophies of various types of early childhood programs and an overview of knowledge and skills related to developing and providing appropriate curriculum and environments for young children. With a solid foundation in the core areas of early childhood education, students will be well prepared to meet the demands in caring for young children. Students completing these courses will meet the requirements of the Department of Social Services to work in a licensed private preschool or childcare center as a fully qualified preschool teacher.

To earn a certificate, students complete the required and elective courses as listed with a grade of P (pass). The exception is for WFPR 100 Career Skills and Resource Lab and/or WFPR 101 Virtual Career Skills and Resource Lab courses. If those courses are required or listed as an elective, students will not receive a grade and instead must complete at least 36 hours in either WFPR 100 Career Skills and Resource Lab or WFPR 101 Virtual Career Skills and Resource Lab. For programs/courses that allow credit for prior learning, at least 75% of all course work must be completed at North Orange Continuing Education. (Contact the CTE Office to learn more about which courses offer credit for prior learning).

Plan of Study

First Year

Semester 1	Hours	Semester 2	Hours
ECED 100		54 ECED 110	54
ECED 105		36 ECED 205	36
ECED 120		54 ECED 215, 225, 200, 220, WFPR 100, or WFPR 101 (Electives Courses - Must Choose 1)	36
ECED 115		36	
		180	126

Total Hours 306

List of Courses

ECED 100 54 Hours

Early Childhood Development

An introduction to the developmental stages of children from prenatal to middle childhood with emphasis on the physical, cognitive, language and social/emotional milestones. Application of developmental and learning theories addressed. This course is part of a program approved by the California Department of Social Services for employment in private facilities. (*Apportionment*)

ECED 105	36 Hours	ECED 220	36 Hours
Family and Community Relationships		Early Childhood Education, Creative Experiences	
Examination of the sociological relationships between family and society; institutional, racial, social, and economical factors affecting the family and the child. Textbook required. This course is part of a program approved by the California Department of Social Services for employment in private facilities. (<i>Apportionment</i>)		In this course, students explore and experience how developmentally appropriate creative experiences can enhance children's learning while developing fine motor, creative expression and problem-solving skills. This course is part of a program approved by the California Department of Social Services for employment in private facilities. (<i>Apportionment</i>)	
ECED 110	54 Hours	ECED 225	36 Hours
Early Childhood Education, Principles and Practice		Early Childhood Education, Music and Movement	
Course examines the history, basic principles, and philosophies of various types of early childhood programs, emphasizing the role of the adult and characteristics of quality programs. This course is part of a program approved by the California Department of Social Services, Community Care Licensing, for employment in private facilities only. Textbook required. This course is part of a program approved by the California Department of Social Services for employment in private facilities. (<i>Apportionment</i>)		Explores areas of music and movement appropriate to a child's development through participating and experimenting. Textbook Required. This course is part of a program approved by the California Department of Social Services for employment in private facilities. (<i>Apportionment</i>)	
ECED 115	36 Hours	WFPR 100	18-180 Hours
Child Health and Safety		Career Skills and Resource Lab	
For teachers and directors of pre-schools, this course will focus on the skills and knowledge needed for developing emergency plans and responding to health and safety issues in the classroom. Textbook required. This course is part of a program approved by the California Department of Social Services for employment in private facilities. (<i>Apportionment</i>)		Free, flexible scheduling to complete and receive help on homework and training on computer, industry related and employability skills. (<i>Apportionment</i>)	
ECED 120	54 Hours	WFPR 101	36 Hours
Curriculum for Early Childhood Education, Introduction		Virtual Career Skills and Resource Lab	
Prerequisite(s): ECED 100: Early Childhood Development.		Lab designed for online students to have access to seminars, assistance, and resources related to Career Technical Education and/or employment skills. (<i>Apportionment</i>)	
This course provides the foundation for curriculum planning, implementation, observation, assessment and evaluation. Emphasis includes modalities, learning styles, environments, activities, schedules, routines and adaptations to facilitate learning for all children. This course is part of a program approved by the California Department of Social Services for employment in private facilities. Textbook required. This course is part of a program approved by the California Department of Social Services for employment in private facilities. (<i>Apportionment</i>)			
ECED 200	36 Hours		
Early Childhood Education, Science and Math			
Plan, organize and implement activities that help children develop skills, appreciation and enthusiasm for science and math. Textbook Required. This course is part of a program approved by the California Department of Social Services for employment in private facilities. (<i>Apportionment</i>)			
ECED 205	36 Hours		
Children with Special Needs			
This course offers a broad study of children with special needs and early childhood education as it relates to inclusion. This course covers federal and state laws and regulations, terminology and definitions, appropriate practices and intervention. This course is part of a program approved by Department of Social Services, Community Care Licensing. This course is part of a program approved by the California Department of Social Services for employment in private facilities. (<i>Apportionment</i>)			
ECED 215	36 Hours		
Language Arts and Literacy in Early Childhood			
This course examines the teacher's role in promoting and facilitating children's emerging literacy and language development through the use of storytelling, books, songs, flannel board stories and puppetry. This course is part of a program approved by the California Department of Social Services, for employment in a private facility. (<i>Apportionment</i>)			